

# Photometric Report

ELP CL IP (High Output mode) – 26 degree

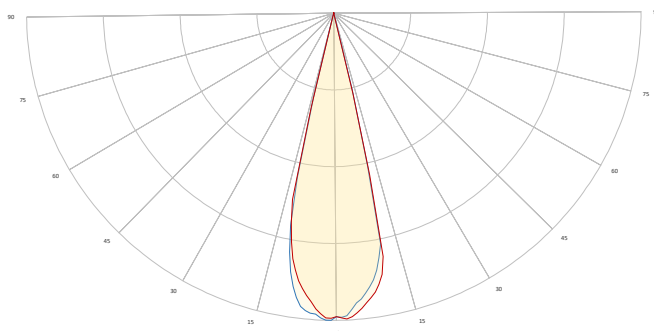
MARTIN PROFESSIONAL R&D OPTICAL LABORATORY

## GENERAL SPECIFICATIONS

Total Fixture Output:	7500 lm
Light Engine Output:	20 klm
Efficacy:	28 Lumen/Watt
Lens Option:	26 ° Lens
Zoomrange:	26 °
CRI:	85
CQS:	N/A
TM-30 Rf:	85.5
TM-30 Rg:	110
TLCI:	85
Color Temperature:	Variable



## MEASUREMENT



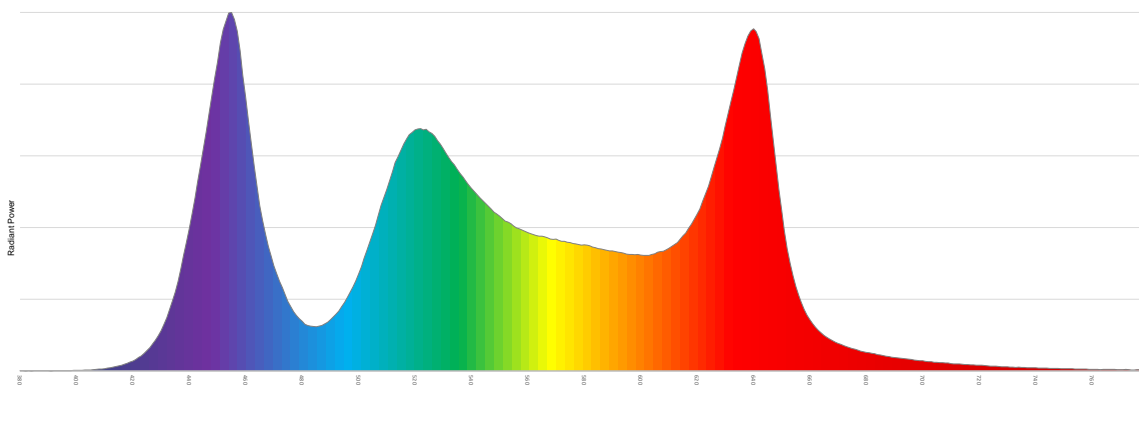
- Vertical - Horizontal

Catalog Number:	9045122814
Measured Output:	7606 lm
Measured Peak:	52932 cd
Consumed Power:	250 W
Efficacy:	30.4 Lm/Watt

Beam Angle (50%):	25.2 °
Field Angle (10%):	28.9 °
Cutoff Angle (3%):	30.1 °

Measurement Condition:	
Ambient Temperature:	25 ° +/- 5 ° C
AC Supply:	230V/50Hz

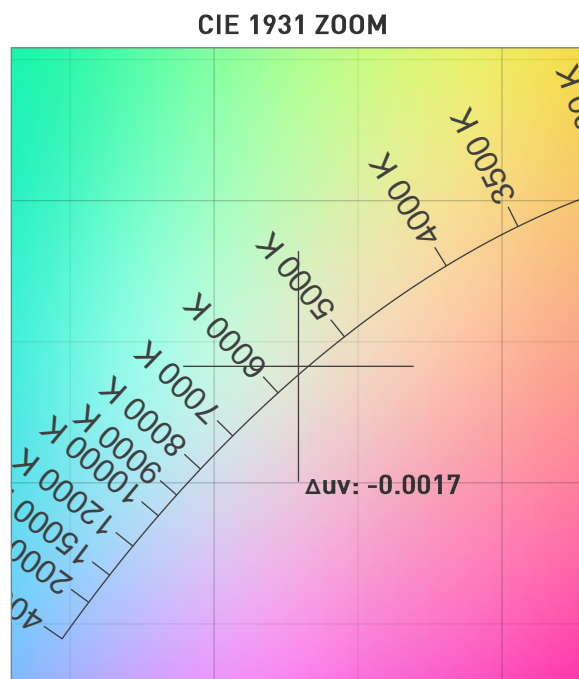
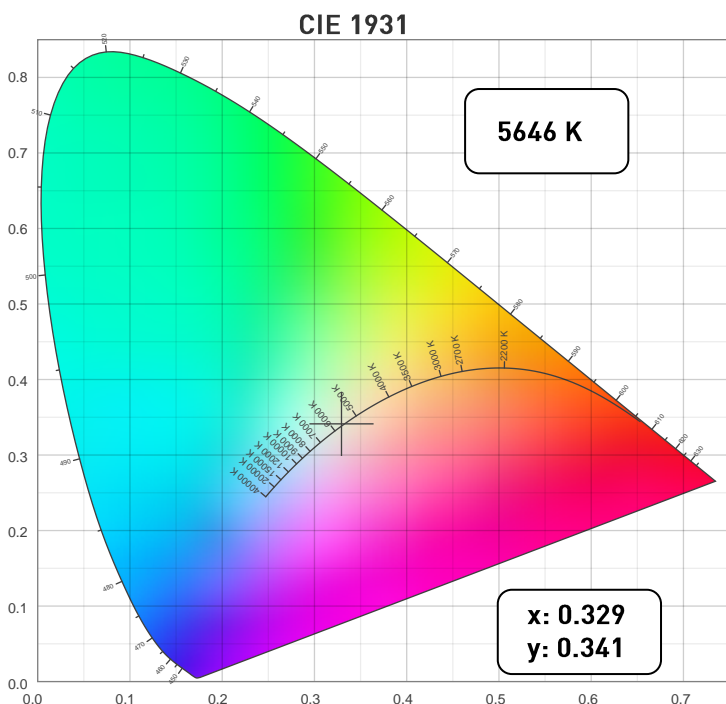
SPECTRAL DISTRIBUTION



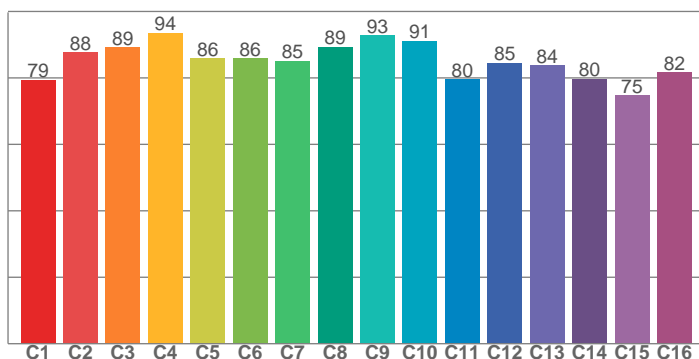
# Photometric Report

ELP CL IP (High Output mode) – 26 degree

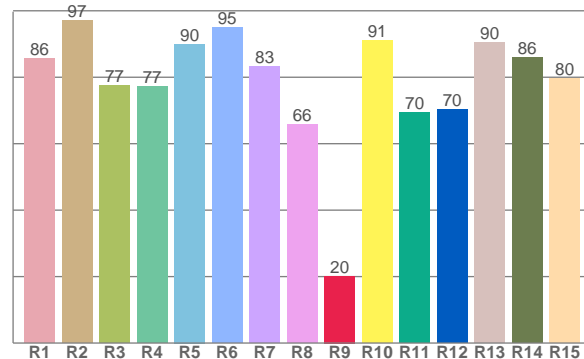
## CHROMATICITY



TM30: 85.5



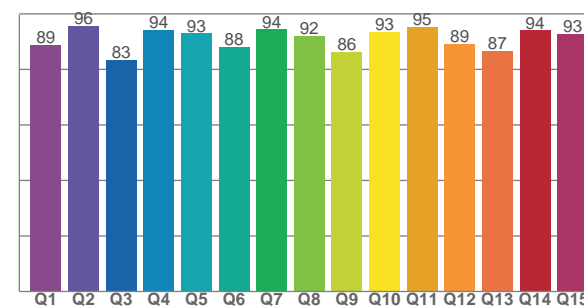
CRI: 83.9 (R1-R8)



## COLOR PARAMETERS

Color Temperature	Color Rendering Index	Red Component	Color Fidelity	Color Gamut
CCT	CRI	CRI R9	TM30 Rf	TM30 Rg
5646 K	83.9	20.2	85.5	110.0

CQS: 90.4



Television Lighting Consistency Index	Color Quality Scale	Color Coordinate CIE 1931	Color Coordinate CIE 1931	Color Coordinate CIE 1964	Color Coordinate CIE 1964	Color Deviation from Black Body
TLCI	CQS	x	y	u	v	Δuv
85	90.4	0.329	0.341	0.205	0.318	-0.0017

# Photometric Report

ELP CL IP (High Output mode) – 26 degree

TM30

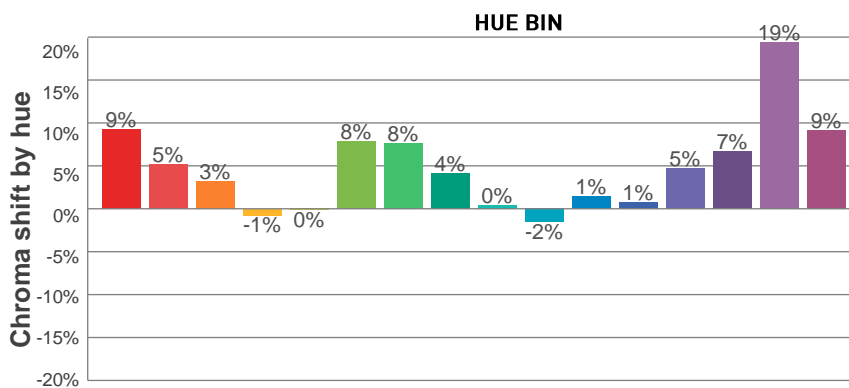
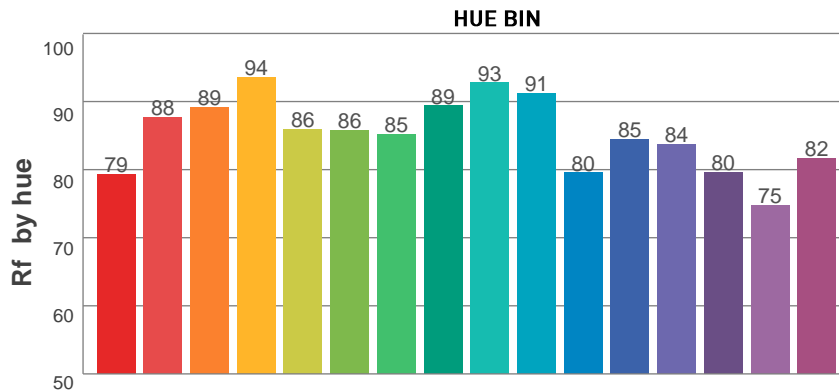
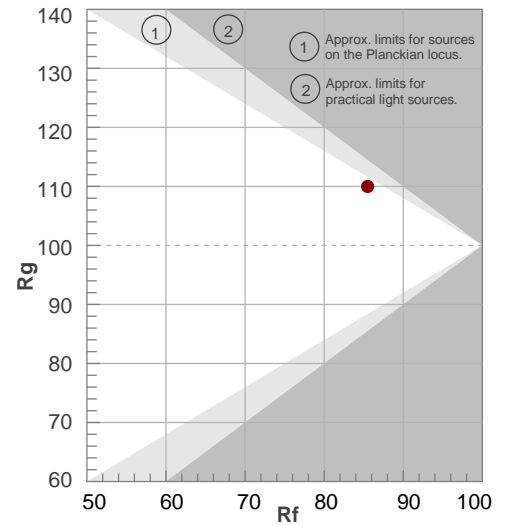
Rf 85.5

Fidelity index Rf

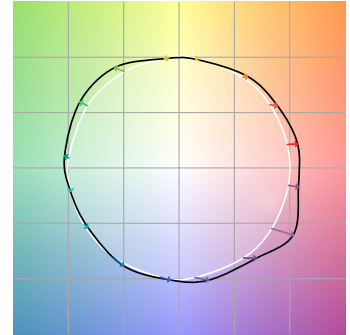
Rg 110.0

Gamut index Rg

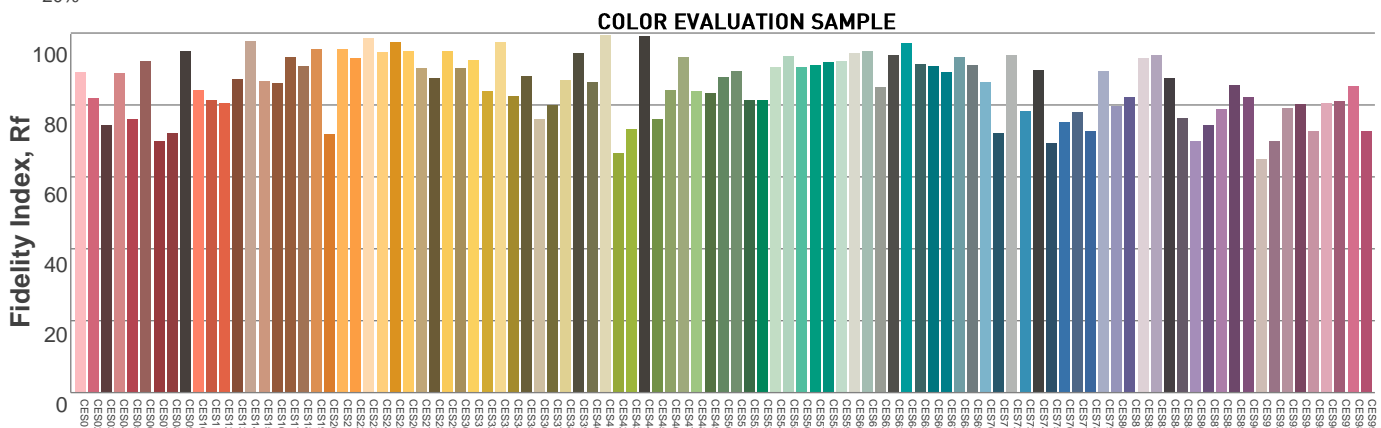
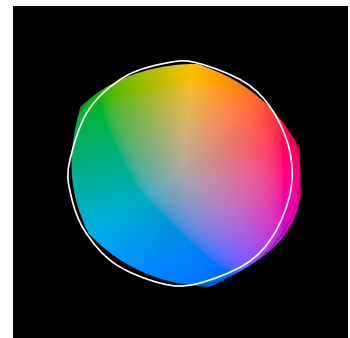
Hue Bin	R <sub>f</sub>	Graphic shifts (%)	
		Chroma	Hue
1	79	9%	-1%
2	88	5%	-4%
3	89	3%	-3%
4	94	-1%	1%
5	86	0%	4%
6	86	8%	5%
7	85	8%	1%
8	89	4%	-1%
9	93	0%	1%
10	91	-2%	4%
11	80	1%	11%
12	85	1%	10%
13	84	5%	12%
14	80	7%	9%
15	75	19%	6%
16	82	9%	0%



COLOR VECTOR GRAPHICS



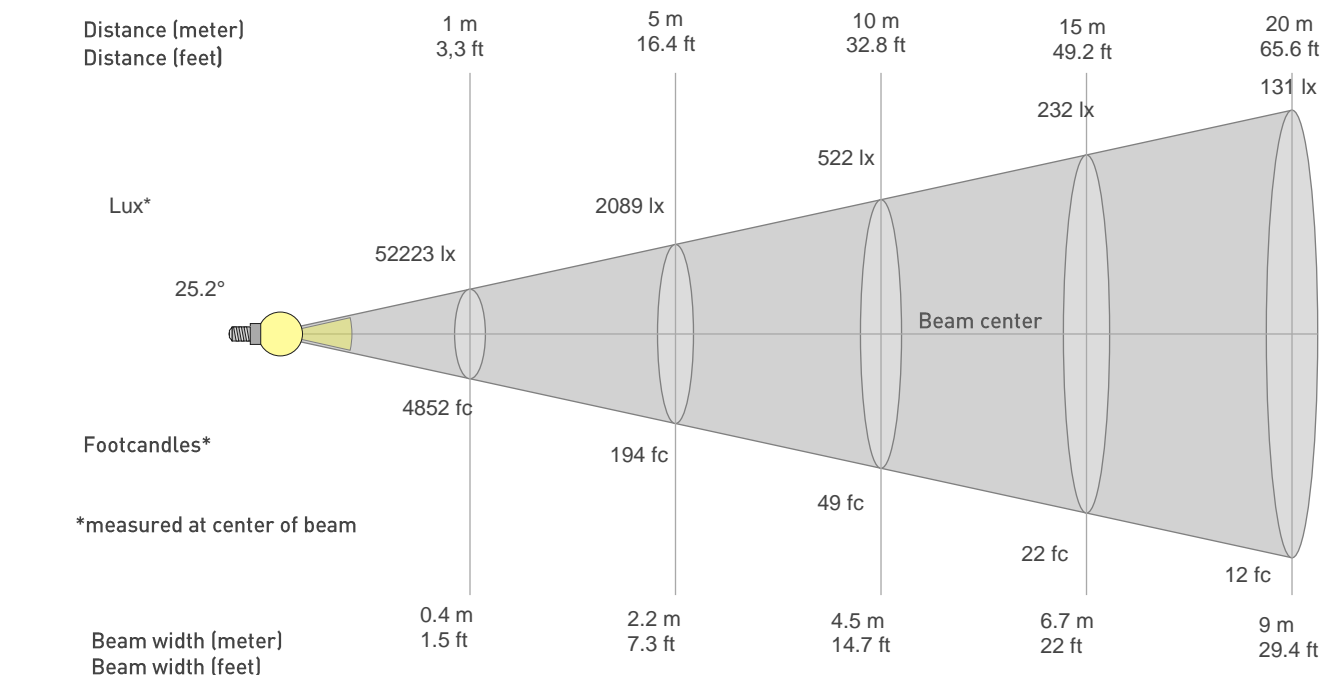
COLOR DISTORTION GRAPHICS



# Photometric Report

ELP CL IP (High Output mode) – 26 degree

## BEAM DETAILS

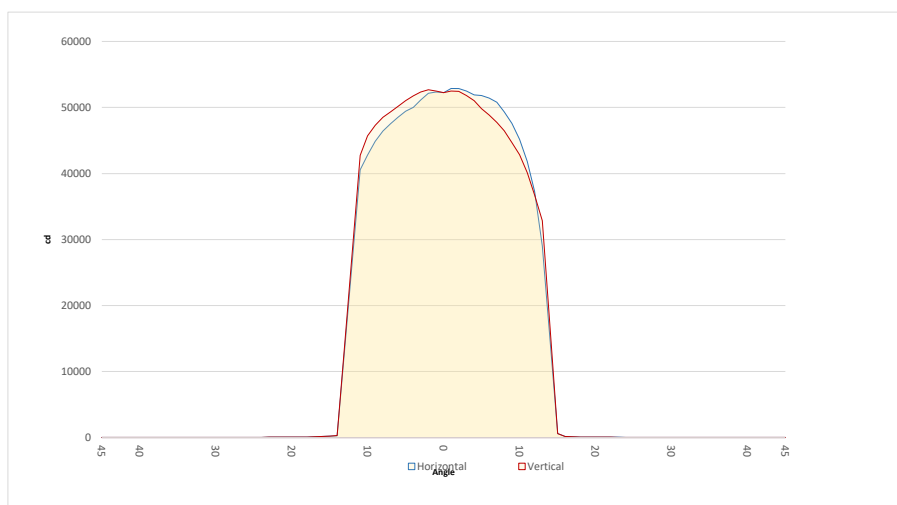


Beam width: = 0.4 \* distance  
Illuminance: = 52223 / (distance<sup>2</sup>)

distance in [m] for illuminance in [lux] distance in [ft] for illuminance in [fc]

## BEAM ILLUMINANCE FROM 1-20M

1m	2m	3m	4m	5m	6m	7m	8m	9m	10m	11m	12m	13m	14m	15m	16m	17m	18m	19m	20m
3.3ft	6.6ft	9.8ft	13.1ft	16.4ft	19.7ft	23ft	26.2ft	29.5ft	32.8ft	36.1ft	39.4ft	42.7ft	45.9ft	49.2ft	52.5ft	55.8ft	59.1ft	62.3ft	65.6ft
52223lx	13056lx	5803lx	3264lx	2089lx	1451lx	1066lx	816lx	645lx	522lx	432lx	363lx	309lx	266lx	232lx	204lx	181lx	161lx	145lx	131lx
4851.7fc	1212.9fc	539.1fc	303.2fc	194.1fc	134.8fc	99fc	75.8fc	59.9fc	48.5fc	40.1fc	33.7fc	28.7fc	24.8fc	21.6fc	19fc	16.8fc	15fc	13.4fc	12.1fc



BEAM ANGLE 50%	FIELD ANGLE 10%	CUTOFF ANGLE 3%
25.2°	28.9°	30.1°